



FENACERCI

AIAS BOLOGNA ONLUS - Italy

FENACERCI - Portugal

VAIMUKAD - Estonia

SUSTENTO - Latvia

DISABILITY NOW - Greece

AFANIAS - Spain

ÉFOÉSZ - Hungary

PORAKA - Republic of
Macedonia

TURKISH SPASTIC CHILDREN
ASSOCIATION in SINOP -
Turkey



Dissemination of the work done within the 2nd booklet and research – Focus Group & Seminar

Roadmap for the prevention of maltreatment of people with intellectual and multiple disabilities

Fenacerci Dessimination Plan

Area of need

- Discussion on prevention issues of maltreatment and evidence of maltreatment within the NGO's

Target group

- Families of young adults with intellectual and multiple disabilities
- NGO's (Fenacerci associates)

Organisation's overall objective

- Pick up the issue of risk of maltreatment
- Raise awareness within their associates on the issues of risks of maltreatment
- Promote internal discussions on prevention issues of maltreatment
- Provide an "intervention protocol" in cases of risk of maltreatment" to their associates
- Compromise the associates to apply the intervention protocol in case of need



Fenacerci Dessimination Plan

Objective in project

Using previous projects outcomes to promote reflection:

4 focus-groups: Self-advocates; Families and Professionals (specialized technical such as psychologists, therapists , social workers and "front line staff").

Networking

Within the FENACERCI's structural network already exists the following nodes:

FENACERCI's Regional Delegate – North, Centre & South

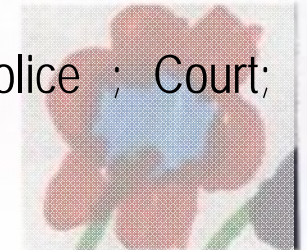
Associates

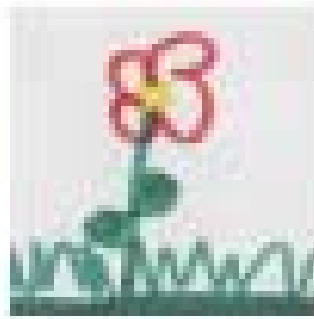
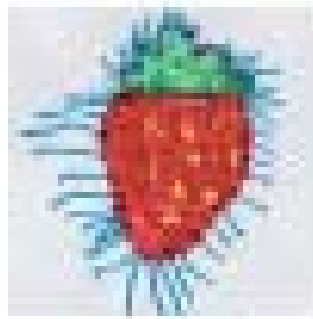
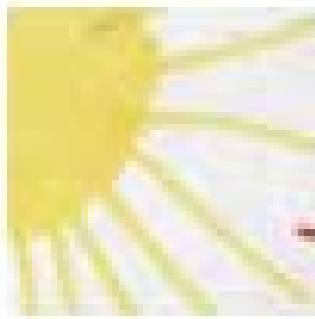
FMH

INR (National Institute of Rehabilitation)

Trough these nodes it would be possible to reach:

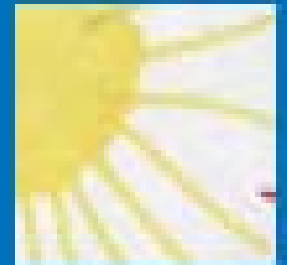
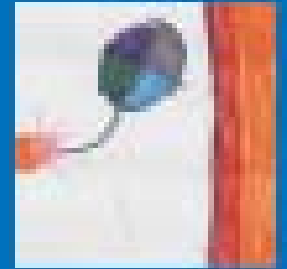
Parents; Self Advocates; Families; Managers; NGO's ; CODEM ; Schools; Police ; Court; Hospitals/Health Centres.



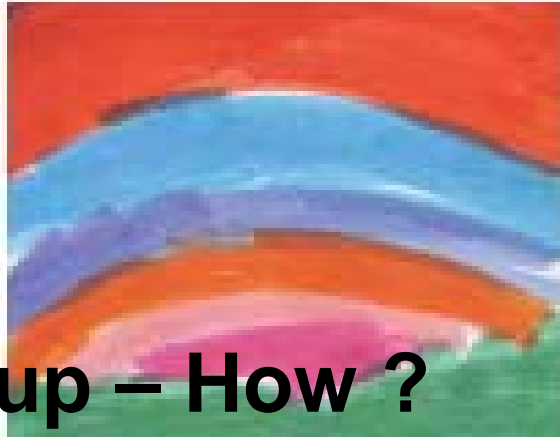


Focus-group Who?

- Two regional Sessions (Lisbon, North and Center)
- 8 focus-group sessions
- 19 self-advocate people (8 female and 11 male)
-
- 22 professionals (21 female e 1 male) – Psychologists, social service, physiotherapy; occupational therapy, kindergarten teacher
- 17 first level professionals (15 female e 2 male)
- 15 families (8 mothers e 7 fathers)

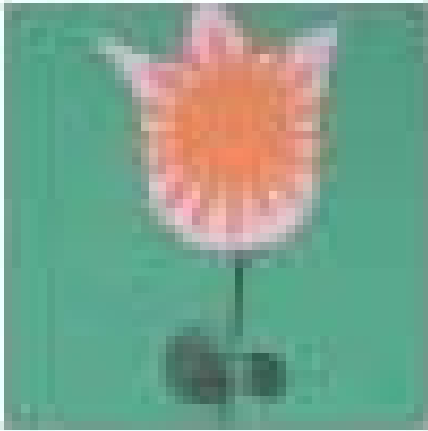


Focus-Group – How ?



- Introduction to focus-group goals
- Presenting key question on power point to the group
- Initiating group reflection by introduction the question “do you agree with this statement”?
- Conducting group reflection on the issue
- Continuing with new question
- Record (voice and image) to collect data
- Exploratory questions at the end

Focus-Group – How ? - example



Statement 1 – “Compared to the young disabled adults, the professionals interviewed seem to attribute a higher impact to disability on the lives of the former than the young adults themselves, although both groups agree that the highest impact is on work, individual well being and the life of the couple.”

Statement 2 – “The self image that professionals attribute to young adults is less positive than that which this group attributes to itself in terms of independence, optimism, psychological strength.”

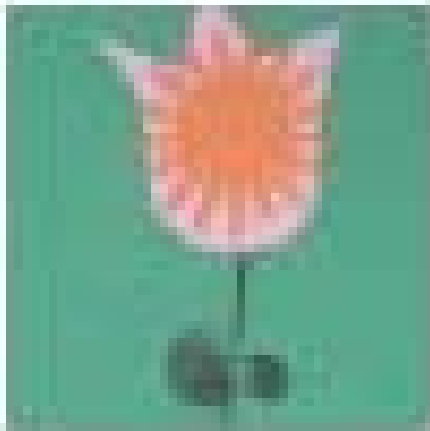
Focus-Group – How ? - example

Ester wants to go to the disco.

She knows the way to go on her own
and also to come back.

Her parent´s don´t let her go.





Exploratory questions:

How is the diagnosis of maltreatment done within the NGO's?

What instruments do NGO's have to do it?

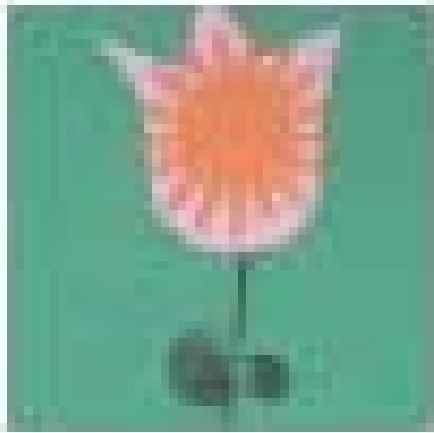
In your professional life, did you have to deal with such cases?

What have you done?

In general how do you consider your professional training in this issues?

In this matter, what do you consider important to change inside your NGO?

And about the prevention of maltreatment and violence?



Outcomes - Focus Group

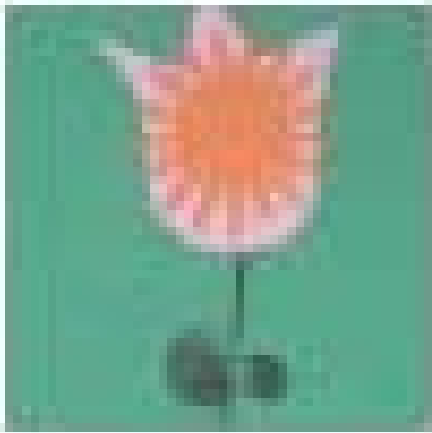
All groups focused on the need to discuss specific procedures to prevent maltreatment inside their institutions.

The main problem for professionals is the fact that there is no written document specifying what to do in such cases.

Specific continuing training for professionals.

- need to discuss what information is useful to families, when a disable child is born, and what kind of support do the professionals really provide to them.

- Diagnosis is a crucial moment to families. Professionals need to manage parent's expectations in those moments.



Outcomes - Focus Group

- Growing old is a present problem to families. The role of the NGO's in supporting families with adults with disability.
- Organizing two different focus-group of professionals (front line staff and specialized professionals) allow a rich discussion between them.
- Gender and sexuality issues with people with disabilities (gender stereotypes and traditional family values).



Focus-Group – next work

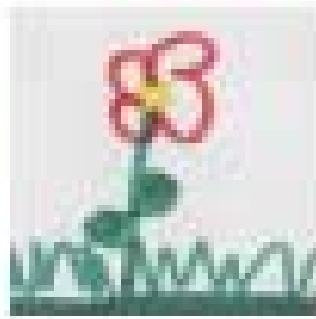
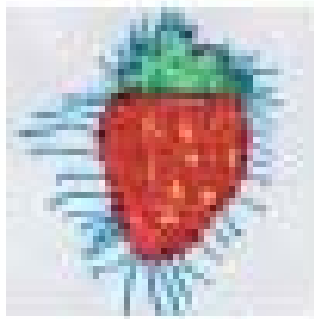
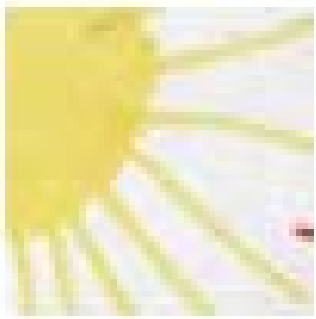
General Goal: Roadmap to prevention

To propose specific guidelines to prevent maltreatment within the NGO's.

Propose a practical instrument to guide professionals on the identification of maltreatment

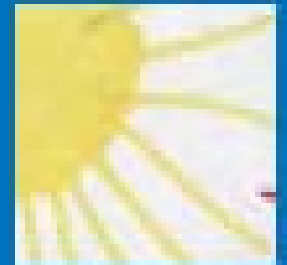
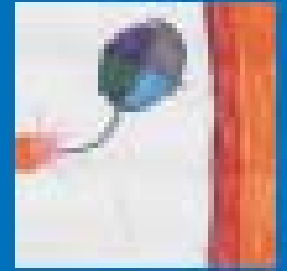
Discuss the document with the professionals of those NGO's





Proposal Roadmap to prevention

- ⦿ A protocol document with guidelines for detecting risk and protective factors of maltreatment and to identify them related to disability.
- ⦿ Determining which risk and protective factors are the most significant in different dimensions for detecting maltreatment. Determining those factors that can be assessed by NGO's professionals.
- ⦿ Draft version of this document proposed by the project team and discussion made in the Lisbon Seminar with the members of the associates and community



Draf Version of the Roadmap - Dimensions of assessment

Emotional/Affective
Biological
Developmental Disabilities
Behavioral Problems
Health
Security
Feeding
Hygiene
Clothing
Education
Family
Home
Finances
Social Context
Person with disability
Sexual Abuse
Physical Abuse



EXEMPLE

DIMENSÃO DE RISCO	AVALIAÇÃO DO GRAU DE RISCO			
CARACTERÍSTICAS FAMILIARES 1	Inexistente/ Não aplicável	Ligeiro/ Verificado pontualmente	Moderado / Verificado regularmente	Elevado/ Verificado constantemente
	0	1	3	5
Fraca iniciativa na resolução de problemas e tomada de decisão				
Fraco ou inexistente apoio da família nuclear				
Fraco ou inexistente apoio da família alargada/ vizinhança/ entidades comunitárias				
Relações conflituosas na família				
Histórias familiares de maus-tratos				
Vida profissional e/ou social muito intensa que se traduz na falta de tempo em estar com a pessoa com deficiência				
Vínculos afectivos entre a pessoa com deficiência e o prestador de cuidados pouco sólidos				
Expectativas irreais em relação à pessoa com deficiência (escolares, ocupacional, laboral)				
Manifestações de cansaço/ exaustão emocional na vivência com a pessoa com deficiência				
TOTAL				

EXEMPLE

INDICADORES DE PROTECÇÃO	AVALIAÇÃO DO GRAU DE PROTECÇÃO			
	Inexistente ou Não aplicável	Risco ligeiro ou Verificado pontualmente	Risco moderado ou Verificado regularmente	Risco elevado ou Verificado constantemente
NA FAMÍLIA	0	1	3	5
Relação de suporte e inter-ajuda entre os elementos da família nuclear				
Existência do suporte da família alargada				
Existência de rede de amigos/vizinhança				
Cooperação dos prestadores de cuidados com os técnicos de acompanhamento				
Boa auto-estima e tolerância à frustração				
Motivação para iniciar um processo de mudança e crescimento pessoal				
Equilíbrio entre firmeza e flexibilidade na relação com a pessoa com deficiência.				
Acesso aos recursos de saúde, educação, etc., existentes na comunidade				
Estabilidade no emprego				
Habitação adequada às necessidades do agregado familiar				
Boa gestão do rendimento familiar				
O prestador de cuidados demonstra responsabilidade no desempenho de tarefas parentais que lhe são inerentes				
TOTAL				

Roadmap - Success factors on assessment process

Multidisciplinary team

For example in considering behavior characteristics specific to disability

Planning

Gather all information needed to complete assessment process

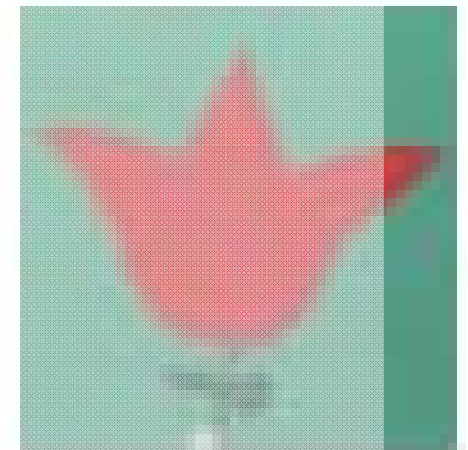
Filling the instrument (checklist)

Answering all items with precision and objectivity. Do not guess or judge.

Attitude toward assessment process

Communicate results inside the organization and to people involved

Establish an individual intervention plan, involving everyone and that keeps the safety of people with disabilities



Lisbon Seminar – 3rd November 2009 – National Institute of Rehabilitation



- Based on the dissemination plan made in Bologna
- Oral presentations (project history and outcomes; Maltreatment Concepts related to Disability; Coordination with the Portuguese Commission on Child Protection)
- Good practices – By one of the associates of Fenacerci (CERCICA) – raising awareness on the issue of maltreatment
- Practical work in groups about the “Roadmap” for the prevention of maltreatment”. The goal of this work was to involve the associates and community in the discussion of the draft version of the document.

Lisbon Seminar – 3rd November 2009 – National Institute of rehabilitation



- 50 participants:
- National Institute for Rehabilitation; ;
National Coordination on Mental Health;
- Municipal Forum of Cascais against Domestic Violence;
- Local Commission on Child Protection (Cascais and Sintra)
- Schools;
- National Institute for Child Support;.

Future Work

From Focus Groups – Roadmap for prevention

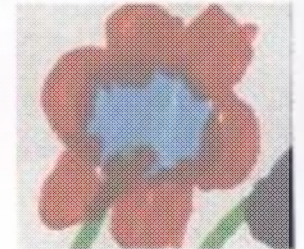
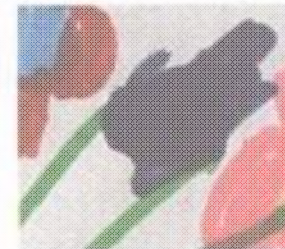
From Seminar – expert validation of the checklist in the roadmap based on the assessment of the Lisbon Seminar; completing the roadmap in issues like theoretical framework;

Adopting the roadmap inside the NGO's ;

Adopting the roadmap by Daphne partners

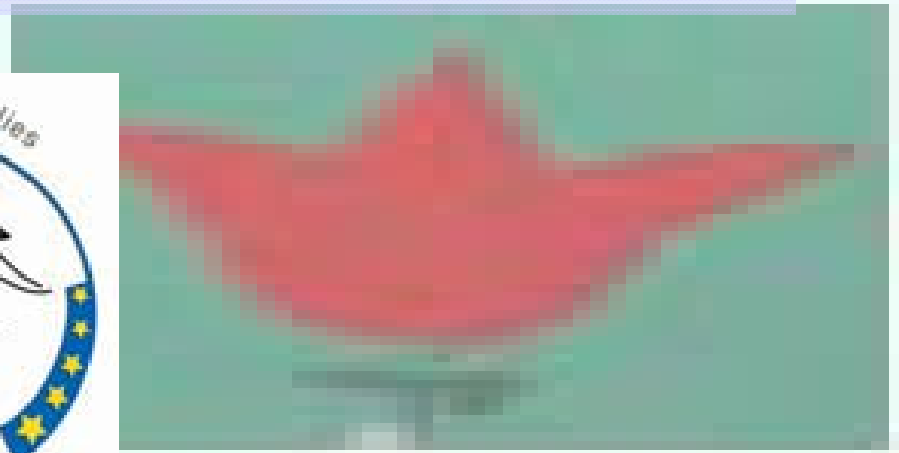
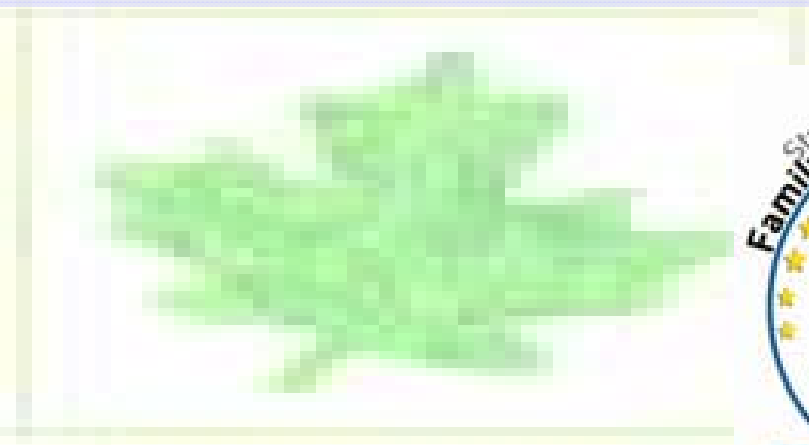
From all project - Research on the issue of Domestic Violence when the person with disability is the aggressor;

Research on the issue of maltreatment inside the NGO (in cases that maltreatment came from professionals)





Making life a safe adventure



Thank You for your attention

